

REVISION

DATE



No. SDJ-315128 & -70

TITLE TWO UNIT STATION POST ASSEMBLY

UNITS in. (mm) ORG. DATE 10-25-94 DWN. J. Corona APP.

REF. LAPP (STATION POST) CAP & PIN REPLACEMENT FOR TR 128

DIMENSIONS

LEAKAGE DISTANCE, in. (mm) 198 (5029)

MECHANICAL VALUES

CANTILEVER STRENGTH

UPRIGHT, lb. (kN) 750 (3.3)

UNDERHUNG, lb. (kN) 700 (3.1)

TENSION STRENGTH, lb. (kN) 20000 (88.9)

TORSION STRENGTH, in.-lb. (kNm) 40000 (4.51)

COMPRESSION STRENGTH, lb. (kN) 60000 (266.8)

ELECTRICAL VALUES

CRITICAL IMPULSE FLASHOVER, POS., kv. 1210

LOW FREQUENCY WET WITHSTAND, kv. 455

IMPULSE WITHSTAND, kv. 1050

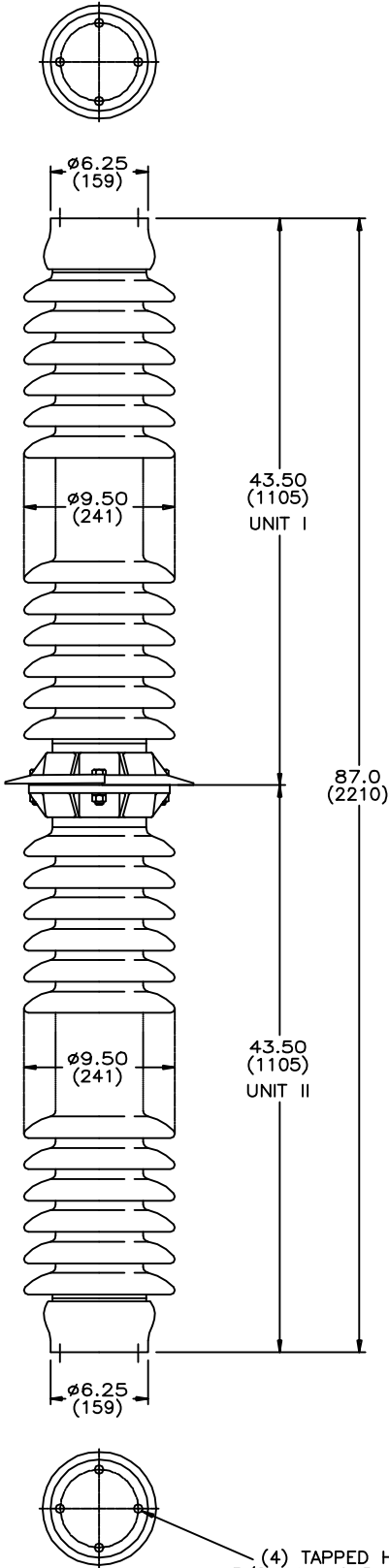
RADIO INFLUENCE VOLTAGE

TEST VOLTAGE, RMS TO GROUND, kv. 146

MAXIMUM RIV - MICROVOLTS AT 1000 kHz 500

NOTES:

1. DIMENSIONS ARE IN INCHES (MILLIMETERS)
2. ALL FERROUS PARTS ARE HOT DIP GALV. PER ASTM A153

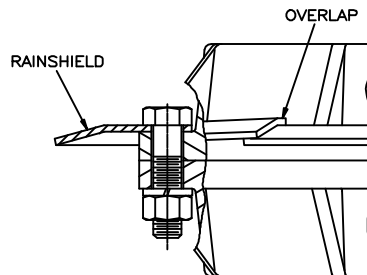


ASSEMBLY	GLAZE COLOR
J-315128	CHOCOLATE
J-315128-70	LIGHT GRAY No.70

ASSY. No.	UNIT I		UNIT II	
	J-315128	J-314985	J-314986	J-314986
J-315128-70	J-314985-A	J-314986-A	J-314986-A	
UNIT CHARACTERISTICS	PETTICOAT DIAMETER	ø9.50 (241)	ø9.50 (241)	ø9.50 (241)
	NUMBER & SIZE OF TOP HOLES	4 TAPPED HOLES 5/8-11+.015	4 HOLES ø.56 (14)	4 HOLES ø.56 (14)
	BOLT CIRCLE	5.0 (127)	8.0 (203)	8.0 (203)
	NUMBER & SIZE OF BOTTOM HOLES	4 HOLES ø.56 (14)	4 TAPPED HOLES 5/8-11+.015	4 TAPPED HOLES 5/8-11+.015
CAPSCREW PKG	BOLTS, NUTS & L.W. SIZE	----	1/2-13	1/2-13
	BOLT LENGTH	----	2.0 (51)	2.0 (51)
	No. OF PACKAGES SUPPLIED	----	(1) J97535A	(1) J97535A

SUPPLIED WITH:

- (1) J-309714 RAINSHIELD ø12.0 (305)



INSTALLATION OF SPLIT RAINSHIELD

(4) TAPPED HOLES
5/8-11 +.015 OVERSIZE
.75 (19) FULL THREAD
EQUALLY SPACED ON
5.0 (127) BOLT CIRCLE
BOTH ENDS

NOTE TO PURCHASER
ALL SALES OF LAPP PRODUCTS ARE
SUBJECT TO OUR STANDARD TERMS
AND CONDITIONS AND THE LIMITED
WARRANTIES THEREUNDER.