

REVISION	DATE	LAPP INSULATOR COMPANY LEROY, N.Y. 14482	No. SDJ-315214 & -70	TITLE STATION POST ASSEMBLY
REVISED & REDRAWN	3-28-96			
PORC O.D. WAS 7.84 (199)	8-15-96	UNITS in. (mm)	ORG. DATE 10-20-94	DWN. J. Corona
REVISED PORCELAIN PROFILE	8-23-96	APP.		
REVISED PORCELAIN PROFILE	5-12-97	REF. TECHNICAL REFERENCE No. TR-214		

DIMENSIONS

LEAKAGE DISTANCE, in. (mm) 43 (1092)

MECHANICAL VALUES

CANTILEVER STRENGTH, lb. (kN) 2000 (8.8)

TENSION STRENGTH, lb. (kN) 14000 (62.2)

TORSION STRENGTH, in-lb. (kN-m) 12000 (1.35)

COMPRESSION STRENGTH, lb. (kN) 15000 (66.7)

ELECTRICAL VALUES

CRITICAL IMPULSE FLASHOVER, POS., kV. 280

LOW FREQUENCY WET WITHSTAND, kV. 100

IMPULSE WITHSTAND, kV. 250

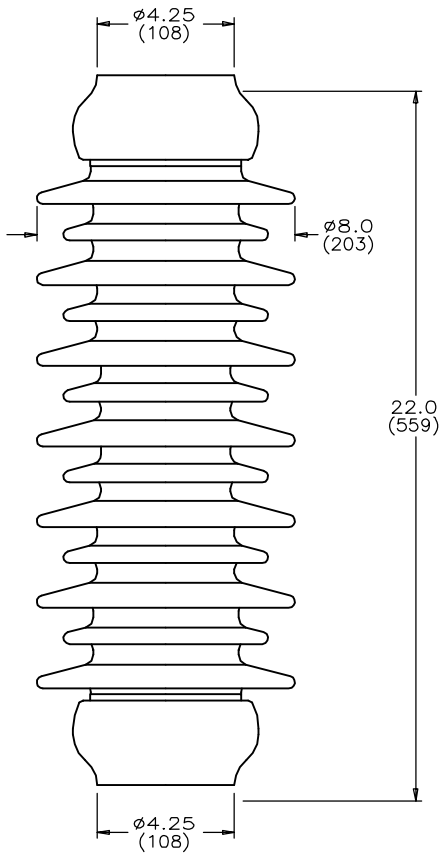
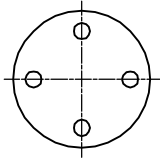
RADIO INFLUENCE VOLTAGE

TEST VOLTAGE, RMS TO GROUND, kV. 30

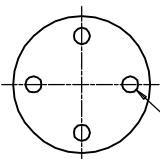
MAXIMUM RIV - MICROVOLTS AT 1000 kHz 200

NOTES:

1. ALL FERROUS PARTS ARE HOT DIP GALV. PER ASTM A153
2. UNIT NUMBER IS STAMPED ON TOP HARDWARE



ASSEMBLY NO.	GLAZE COLOR
J-315214	CHOCOLATE
J-315214-70	LIGHT GRAY No.70



4 TAPPED HOLES
1/2-13 +.015 OVERSIZE
.62 (16) FULL THREAD
ON 3.0 (76) B.C.
BOTH ENDS

NOTE TO PURCHASER
ALL SALES OF LAPP PRODUCTS ARE
SUBJECT TO OUR STANDARD TERMS
AND CONDITIONS AND THE LIMITED
WARRANTIES THEREUNDER.