

REVISION	DATE		 No. SDJ-315216 & -70
REVISED & REDRAWN	5-31-96		
REVISED PORCELAIN O.D.	7-14-97	INSULATOR COMPANY LEROY, N.Y. 14482	TITLE STATION POST ASSEMBLY

UNITS in. (mm)	ORG.DATE 10-18-94	DWN. J. Corona	APP.
REF. TECHNICAL REFERENCE No. TR-216			

DIMENSIONS

LEAKAGE DISTANCE, in. (mm) 72 (1829)

MECHANICAL VALUES

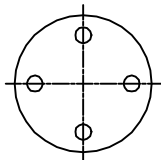
CANTILEVER STRENGTH, lb. (kN) 1500 (6.7)
 TENSION STRENGTH, lb. (kN) 16000 (71.2)
 TORSION STRENGTH, in-lb. (kNm) 15000 (1.69)
 COMPRESSION STRENGTH, lb. (kN) 25000 (111.2)

ELECTRICAL VALUES

CRITICAL IMPULSE FLASHOVER, POS., kV. 390
 LOW FREQUENCY WET WITHSTAND, kV. 145
 LIGHTNING IMPULSE WITHSTAND, kV. 350

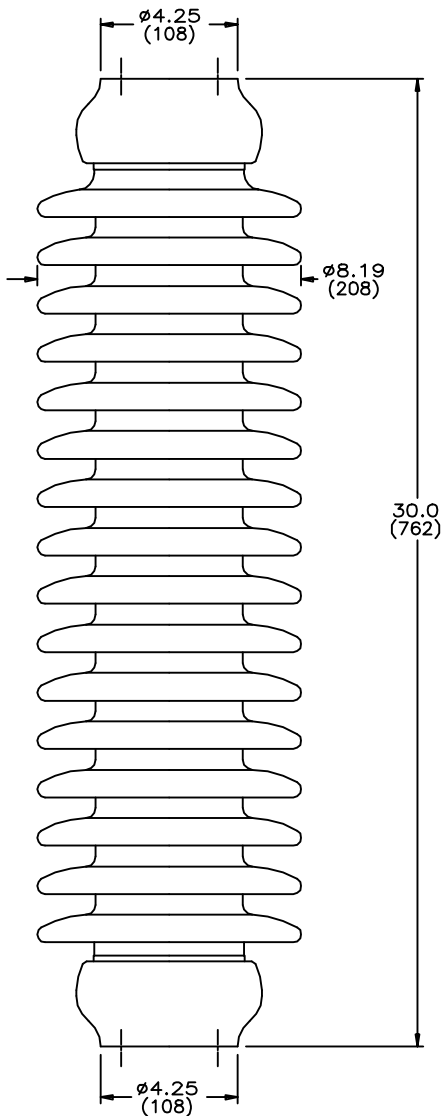
RADIO INFLUENCE VOLTAGE

TEST VOLTAGE, RMS TO GROUND, kV. 44
 MAXIMUM RIV - MICROVOLTS AT 1000 kHz 200

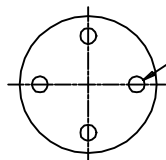


NOTE:

ALL FERROUS PARTS ARE HOT DIP GALV. PER ASTM A153



ASSEMBLY	GLAZE COLOR
J-315216	CHOCOLATE
J-315216-70	LIGHT GRAY No.70



4 TAPPED HOLES
 1/2-13 +.015 OVERSIZE
 .62 (16) FULL THREAD
 ON 3.0 (76) B.C.
 BOTH ENDS

NOTE TO PURCHASER
 ALL SALES OF LAPP PRODUCTS ARE
 SUBJECT TO OUR STANDARD TERMS
 AND CONDITIONS AND THE LIMITED
 WARRANTIES THEREUNDER.