
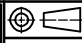
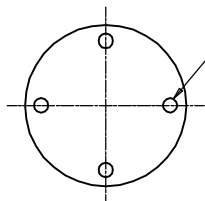
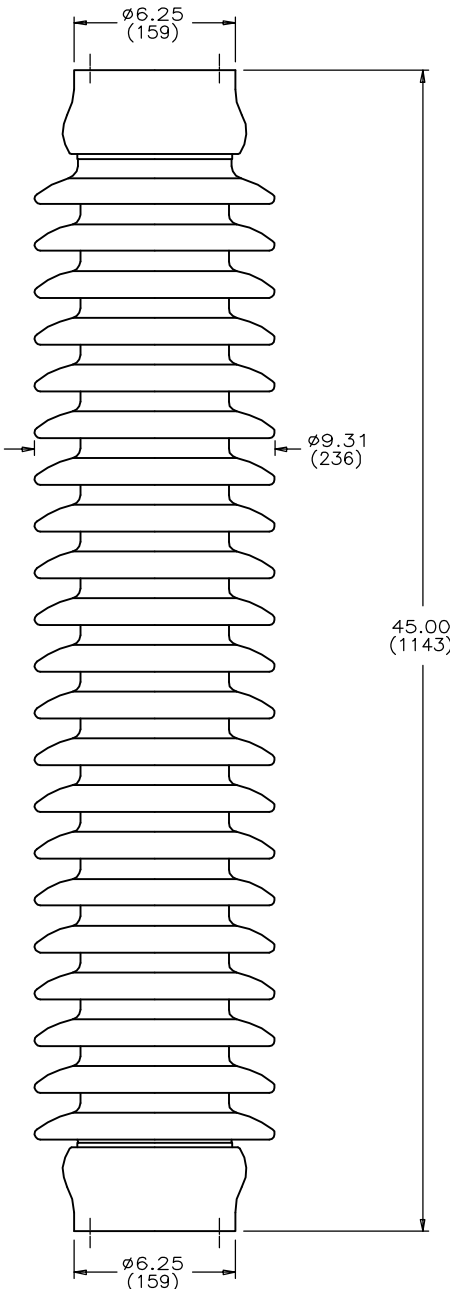
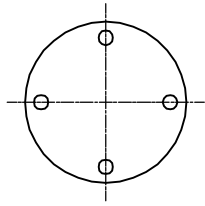


REVISION	DATE
REVISED & REDRAWN	12-19-95
ERROR: NUMBERS IN TABLE WERE 318286 & -70	3-26-96

 LAPP INSULATOR COMPANY LEROY, N.Y. 14482		No. SDJ-315286 & -70
	TITLE STATION POST ASSEMBLY	

UNITS in. (mm)	ORG.DATE 7-13-94	DWN. <i>F. Doyle</i>	APP.
REF. TECHNICAL REFERENCE No. TR-286			



4 TAPPED HOLES
 5/8-11 +.015 OVERSIZE
 .69 (17) FULL THREAD
 ON 5.0 (127) BOLT CIRCLE
 BOTH ENDS

DIMENSIONS

LEAKAGE DISTANCE, in. (mm) 99 (2515)

MECHANICAL VALUES

CANTILEVER STRENGTH, lb. (kN) 1700 (7.6)
 TENSION STRENGTH, lb. (kN) 20000 (89.0)
 TORSION STRENGTH, in-lb. (kNm) 40000 (4.52)
 COMPRESSION STRENGTH, lb. (kN) 60000 (266.9)

ELECTRICAL VALUES

CRITICAL IMPULSE FLASHOVER, POS., kV. 610
 LOW FREQUENCY WET WITHSTAND, kV. 230
 LIGHTNING IMPULSE WITHSTAND, kV. 550

RADIO INFLUENCE VOLTAGE

TEST VOLTAGE, RMS TO GROUND, kV. 73
 MAXIMUM RIV - MICROVOLTS AT 1000 kHz 200

NOTE:

ALL FERROUS PARTS ARE HOT DIP GALV. PER ASTM A153

ASSEMBLY	GLAZE COLOR
J-315286	CHOCOLATE
J-315286-70	LIGHT GRAY No.70