

REVISION HISTORY

DRAWING / DESIGN CREATED

DATE

01-25-06 JRC



INSULATORS LLC
 LEROY, N.Y. 14482
 (585) 768-6221
 SUBSTATION DIVISION



in. [mm]

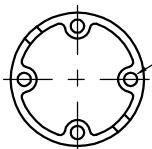
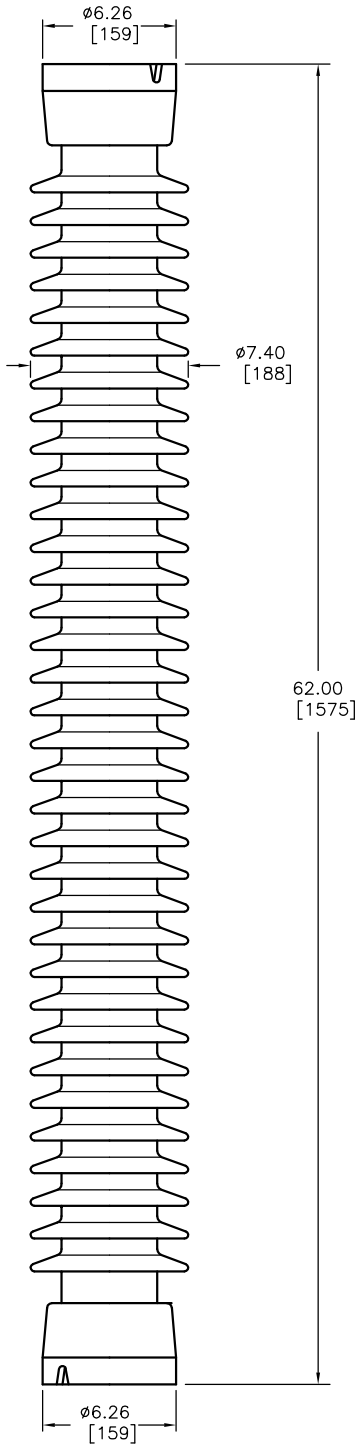
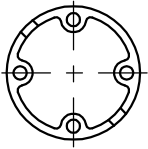
PART NUMBER

315291G-70

TITLE

STATION POST ASSEMBLY

REF. TECHNICAL REFERENCE No. TR-291



4 TAPPED HOLES
 5/8-11 +.015 OVERSIZE
 .63 [16] MIN. FULL THREAD
 ON 5.00 [127] BOLT CIRCLE
 BOTH ENDS

DIMENSIONS

LEAKAGE DISTANCE, in. [mm] 132 [3353]

MECHANICAL VALUES

CANTILEVER STRENGTH, lb. [kN] 1200 [5.3]

TENSION STRENGTH, lb. [kN] 20000 [88.9]

TORSION STRENGTH, in-lb. [kNm] 40000 [4.52]

COMPRESSION STRENGTH, lb. [kN] 60000 [266.8]

ELECTRICAL VALUES

CRITICAL IMPULSE FLASHOVER, POS., kV. 810

LOW FREQUENCY WET WITHSTAND, kV. 315

LIGHTNING IMPULSE WITHSTAND, kV. 750

RADIO INFLUENCE VOLTAGE

TEST VOLTAGE, RMS TO GROUND, kV. 103

MAXIMUM RIV - MICROVOLTS AT 1000 kHz 500

NOTES:

1. ALL FERROUS PARTS ARE HOT DIP GALVANIZED.
2. GLAZE COLOR: LIGHT GRAY No. 70

NOTE TO PURCHASER
 ALL SALES OF LAPP PRODUCTS ARE
 SUBJECT TO OUR STANDARD TERMS
 AND CONDITIONS AND THE LIMITED
 WARRANTIES THEREUNDER.

DWG. No. 10180

DWG. TYPE SALES

AutoCAD 2000

DWN. J. Corona

APP.