

REVISION

DATE

LAPP
INSULATOR COMPANY
LEROY, N.Y. 14482

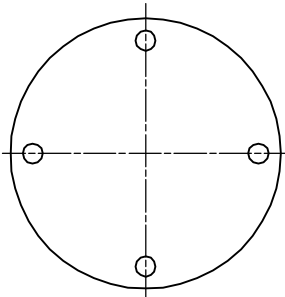


No. SDJ-318461 & -70

TITLE STATION POST ASSEMBLY

UNITS in. (mm) ORG.DATE 5-1-96 DWN. F. Doyle APP.

REF. J-309588



DIMENSIONS

LEAKAGE DISTANCE, in. (mm) 72 (1829)

MECHANICAL VALUES

CANTILEVER STRENGTH, lb. (kN) 6000 (26.7)
TENSION STRENGTH, lb. (kN) 40000 (177.9)
TORSION STRENGTH, in-lb. (kNm) 90000 (7.96)
COMPRESSION STRENGTH, lb. (kN) 120000 (533.8)

ELECTRICAL VALUES

CRITICAL IMPULSE FLASHOVER, POS., kv. 390
LOW FREQUENCY WET WITHSTAND, kv. 145
LIGHTNING IMPULSE WITHSTAND, kv. 350

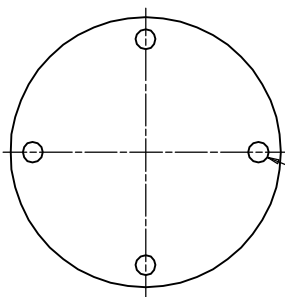
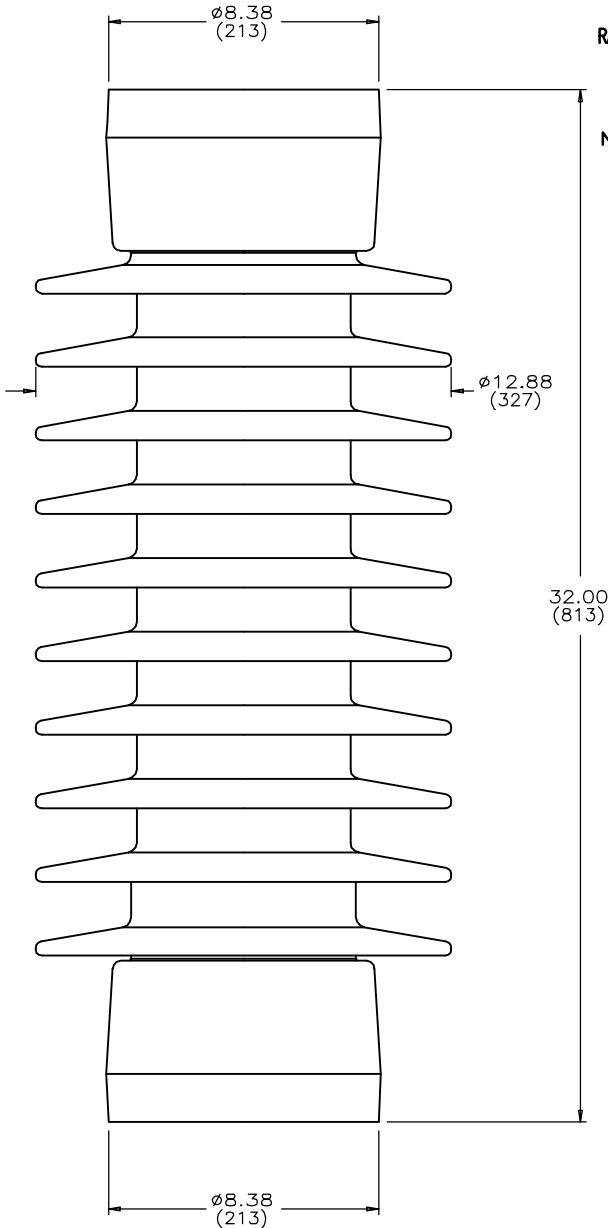
RADIO INFLUENCE VOLTAGE

TEST VOLTAGE, RMS TO GROUND, kv. 44
MAXIMUM RIV - MICROVOLTS AT 1000 kHz 200

NOTE:

ALL FERROUS PARTS ARE HOT DIP GALV. PER ASTM A153

ASSEMBLY	GLAZE COLOR
J-318461	CHOCOLATE
J-318461-70	LIGHT GRAY No.70



4 TAPPED HOLES
3/4-10 +.015 OVERSIZE
.88 (22) FULL THREAD
ON 7.0 (178) B.C.
BOTH ENDS

NOTE TO PURCHASER
ALL SALES OF LAPP PRODUCTS ARE
SUBJECT TO OUR STANDARD TERMS
AND CONDITIONS AND THE LIMITED
WARRANTIES THEREUNDER.