
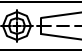


REVISION	DATE	 <b>LAPP INSULATOR Co.</b> LEBROY, N.Y. 14462	 No. <b>SDJ-319056 &amp; -70</b>
INSULATOR O.D. WAS 17.00" (432 mm)	10-6-00 KC		
DATE	5-10-95	SCALE	1/8
DWN.	<i>D. Connolly</i>	CHK.	
APP.		BK.No. 84T1	
REF. LAPP (STACKING) CAP & PIN REPLACEMENT FOR TR 56 DWG. NO. 6110			

CATALOG NO.	UNITS	GLAZE COLOR
J-319056	J-319140	CHOCOLATE
J-319056-70	J-319140-70	LIGHT GRAY No. 70

**DIMENSIONS**

LEAKAGE DISTANCE, in. (mm) 66 (1676)

**MECHANICAL VALUES**

**CANTILEVER STRENGTH:**

UPRIGHT, lbs. (kN) 3000 (13.3)  
 UNDERHUNG, lbs. (kN) 2350 (10.5)  
 TENSION STRENGTH, lbs. (kN) 20000 (88.9)  
 TORSION STRENGTH, in.-lbs. (k-Nm) 40000 (4.5)  
 COMPRESSION STRENGTH, lbs. (kN) 60000 (266.9)

**ELECTRICAL VALUES**

CRITICAL IMPULSE FLASHOVER, POS. KV. 410  
 LOW FREQUENCY WET WITHSTAND, KV 160\*  
 IMPULSE WITHSTAND, KV. 350\*

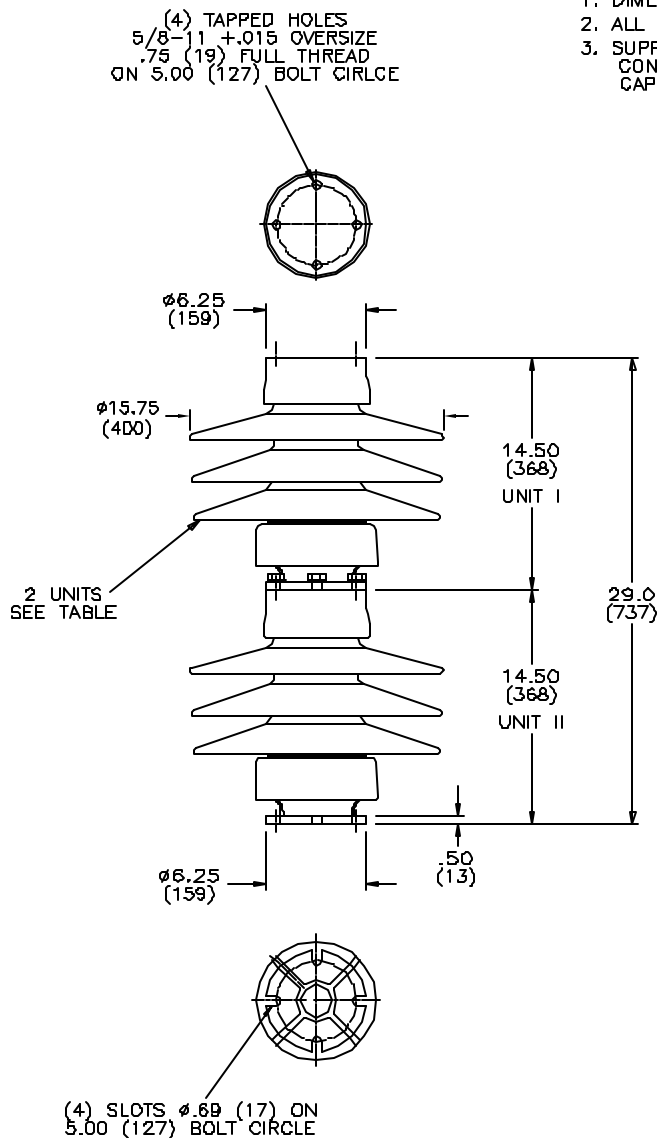
**RADIO INFLUENCE VOLTAGE**

TEST VOLTAGE - RMS TO GROUND, KV 44  
 MAXIMUM RIV AT 1000 KHz, MICROVOLTS 200

\*WITHSTAND RATINGS ARE PREDICATED ON THE USE OF A SUBBASE 3.50" HIGH OR ITS EQUIVALENT.

**NOTES**

1. DIMENSIONS ARE IN INCHES (MILLIMETERS).
2. ALL FERROUS PARTS ARE HOT DIP GALVANIZED.
3. SUPPLIED WITH (2) J-97533 CAP SCREW PACKAGES CONSISTING OF: (4) 5/8-11 X 1.25 HEX HEAD CAP SCREWS AND LOCK WASHERS - GALV.STL.



NOTE TO PURCHASER  
 ALL SALES OF LAPP PRODUCTS ARE  
 SUBJECT TO OUR STANDARD TERMS  
 AND CONDITIONS AND THE LIMITED  
 WARRANTIES THEREUNDER.