

REVISION	DATE	No.	1549
REDRAWN ON CAD 17.38 (441) WAS 17.00 (432)	10-6-97 JRC	TIE TOP LINE POST	
LAPP INSULATOR COMPANY JERsey, N. J. 14468		TITLE	
UNITS in. (mm)	ORG. DATE 4-16-34	DWN. J. Berona	APP. Powell
REF. "N" NECK - 55 KV			

CHOCOLATE GLAZE		LIGHT GRAY No.70 GLAZE	
CATALOG No.	STUD TYPE	CATALOG No.	STUD TYPE
F-9355	FIGURE 1	F-9355-70	FIGURE 1
F-9455	FIGURE 2	F-9455-70	FIGURE 2
F-9355-X	NO STUD	F-9355-X-70	NO STUD
F-9455-X	NO STUD	F-9455-X-70	NO STUD

ASA CLASS
 SHORT STUD UNITS (FIGURE 1) 57-4S
 LONG STUD UNITS (FIGURE 2) 57-4L

ELECTRICAL PATH DISTANCES
 LEAKAGE DISTANCE, in. (mm) 40 (1016)
 DRY ARCING DISTANCE, in. (mm) 14.5 (368)

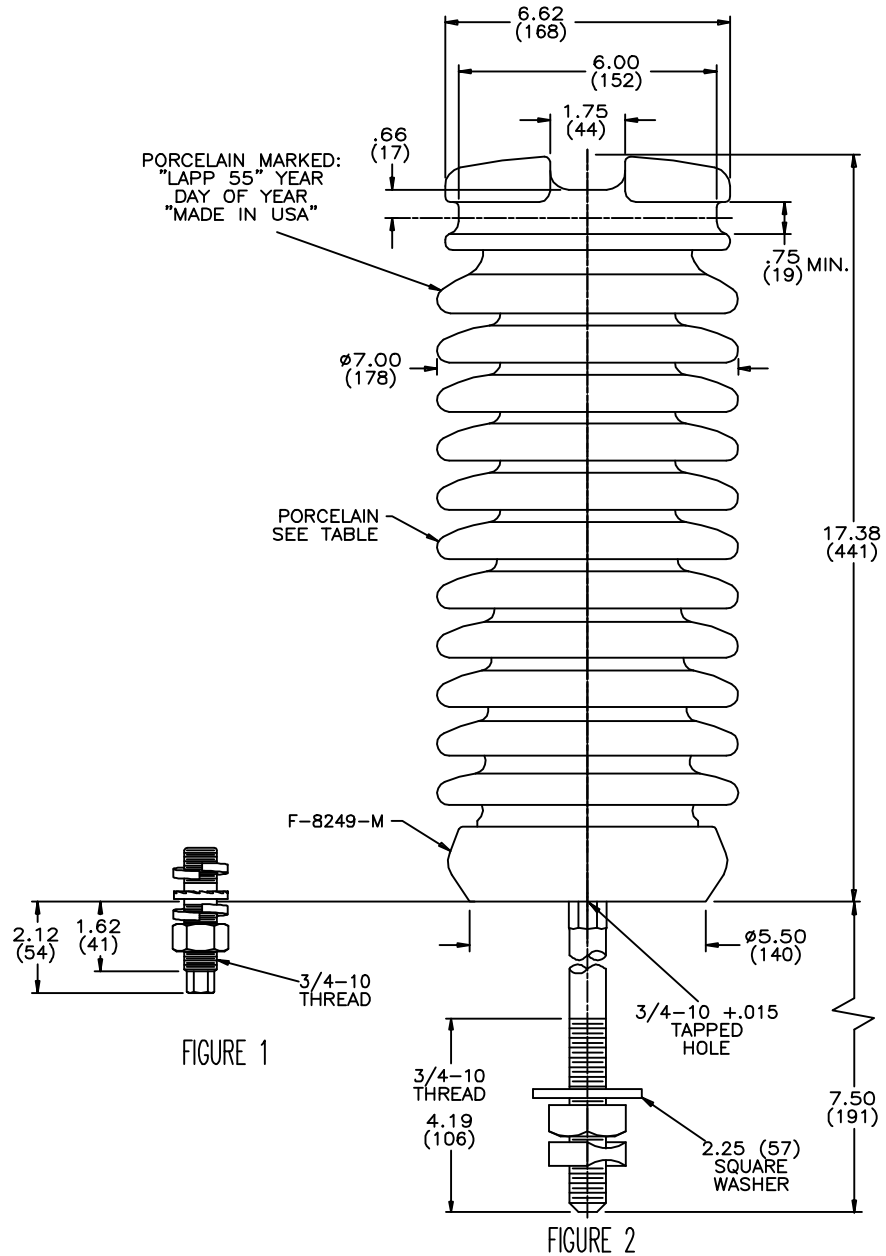
MAXIMUM MECHANICAL DESIGN VALUES
 CANTILEVER STRENGTH, lb. (kN) 2800 (12.5)
 MAX.RECOMMENDED WORKING LOAD, lb. (kN) 1120 (4.9)

ELECTRICAL VALUES
 LOW FREQUENCY DRY FLASHOVER, kV 150
 LOW FREQUENCY WET FLASHOVER, kV 125
 CRITICAL IMPULSE FLASHOVER, POS., kV 255
 CRITICAL IMPULSE FLASHOVER, NEG., kV 340

RADIO INFLUENCE VOLTAGE
 TEST VOLTAGE, RMS TO GROUND, kV 44
 MAXIMUM RIV AT 1000 KHZ, MICROVOLTS 200

- NOTES
1. DIMENSIONS ARE IN INCHES (MILLIMETERS).
 2. ALL FERROUS PARTS ARE HOT DIP GALVANIZED.
 3. UNASSEMBLED STUD SHIPPED WITH INSULATOR, IN A SEPERATE CONTAINER
 4. 3/4-10 +.015 UNC2B TAPPED HOLE, .88 (22) FULL THREAD IN BASE FOR STUD

DWG ID: 9242



NOTE TO PURCHASER: PRODUCTS ARE SUBJECT TO OUR STANDARD TERMS AND CONDITIONS AND THE LIMITED WARRANTIES THEREUNDER.